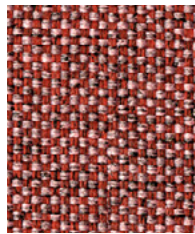
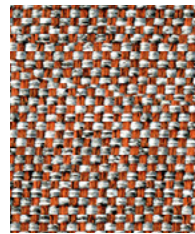


**Rivet**

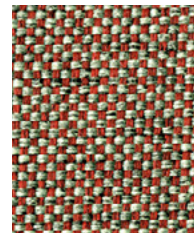
**camira**



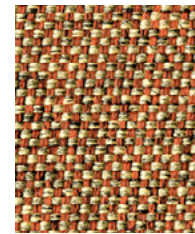
**Forge**  
EGL12



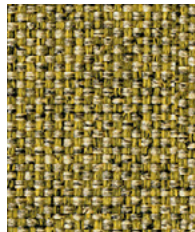
**Molten**  
EGL09



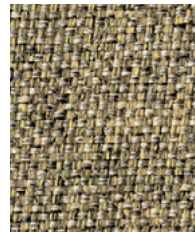
**Abraid**  
EGL13



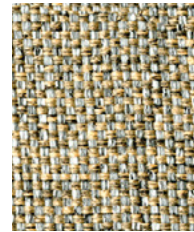
**Copper**  
EGL14



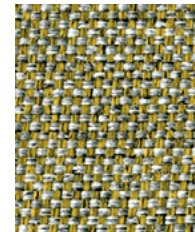
**Spark**  
EGL10



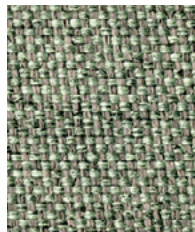
**Wire**  
EGL03



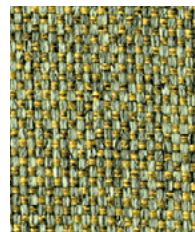
**Resin**  
EGL04



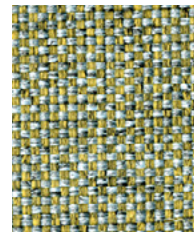
**Alloy**  
EGL05



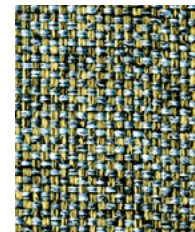
**Ferrous**  
EGL15



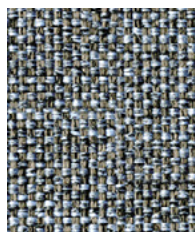
**Tungsten**  
EGL07



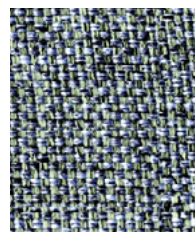
**Burnish**  
EGL11



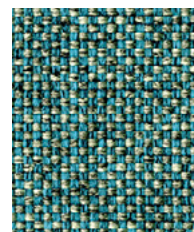
**Chromoly**  
EGL19



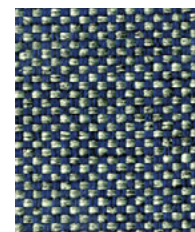
**Solder**  
EGL18



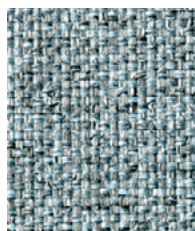
**Tensile**  
EGL20



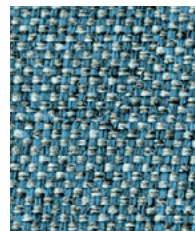
**Verdigris**  
EGL21



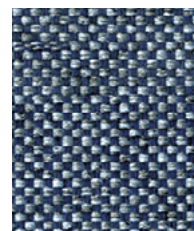
**Hammer**  
EGL27



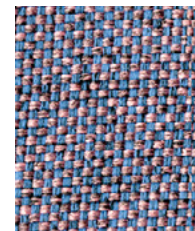
**Prime**  
EGL16



**Quench**  
EGL23

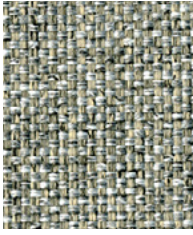


**Crucible**  
EGL24

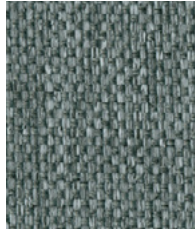


**Fuse**  
EGL08

Photographic fabric scans are not colour accurate. Always request actual fabric samples before ordering.



**Vitreous**  
EGL01



**Galvanise**  
EGL26



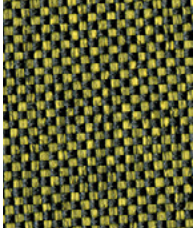
**Cast**  
EGL25



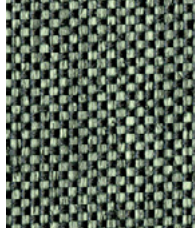
**Deep Clay**  
EGL32



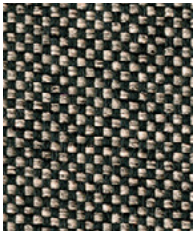
**Woodrose**  
EGL33



**Olive**  
EGL31



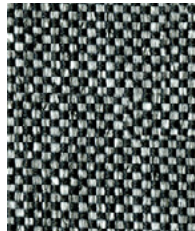
**Hemlock**  
EGL34



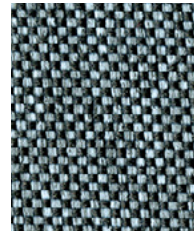
**Twig**  
EGL49



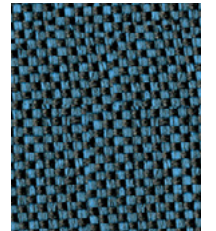
**Otter**  
EGL36



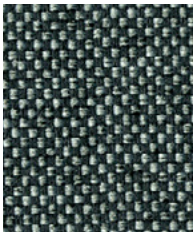
**Grey Brindle**  
EGL50



**Deep Sea**  
EGL48



**Lagoon**  
EGL35



**Charcoal**  
EGL37



Task seating



Soft seating

Cigarette  
& MatchBleach  
cleanable

Washable



Environmental



Year guarantee

With Treatment



Medium Hazard

Rivet is a fixing fabric which not only connects with the modern collaborative workplace, but also forms a bridge between textile traditions and future innovation. Designed to blend the aesthetic qualities of luxury woollen apparel with modern performance sportswear, Rivet is a lightly textured hopsack which emulates the swathe of suiting in a well-heeled synthetic.

Made from 100% post-consumer recycled polyester from used plastic bottles, Rivet celebrates Camira's 20 years' experience in designing and manufacturing recycled fabrics.



## Technical information

### UK

#### Composition

100% Post Consumer Recycled Polyester

#### Environment

Certified to the EU Ecolabel  
Certified to Indoor Advantage™ Gold  
Made from 100% post-consumer recycled polyester

#### Width

140 cm minimum

#### Weight

280 g/m<sup>2</sup> ±5% (392 g/lin.m ±5%)

#### Abrasion Resistance\*

Heavy duty / 10 year guarantee  
Independently certified to ≥80,000  
Martindale cycles

#### Flammability

EN 1021 - 1 (cigarette)  
EN 1021 - 2 (match)  
BS 7176 Low Hazard  
UNI 9175 Classe 1 IM

**Optional: Please specify when ordering:**

BS 5852 Ignition Source 5 with EnviroFlam5  
BS 7176 Medium Hazard with EnviroFlam5  
The Furniture and Furnishing (Fire Safety) Regulations 1988 (UK domestic cigarette and match) with EnviroFlam5

*Note: Flammability performance is dependent on components used. Our certificates show what substrates have been used in our tests. For composite tests customers must ensure their complete furniture meets the necessary standards.*

#### Light Fastness

5-6 (ISO 105 - B02)

#### Fastness to Rubbing

Wet: 4, Dry: 4 (ISO 105 - X12)

#### Bleach Cleanable

ISO 105 E03 colour change 4 for dilution factor 1:4 chlorine solution

#### Cleaning

Vacuum regularly. Wipe with a damp cloth using a proprietary upholstery shampoo/soap. For deeper cleaning use steam, bleach, alcohol or professionally dry clean. Can be washed at 60°C. Full details can be found in our cleaning and disinfection guide.

\*Abrasion testing produces a wide variability of results even from the same test sample. The independent certificate of ≥80,000 cycles is available on our website or from our customer service team. Internally we specify this product at >50,000 cycles which we believe is realistic for repeatability of testing. Please be aware that abrasion testing alone is not a reliable indicator of the actual wear performance of fabrics. We're so confident in the durability of our products that we provide a robust 10 year guarantee (full details available). Please note that seam performance is dependent on seam construction and needle and thread type. We recommend that appropriate sewing advice be taken. Batch to batch variations in shade may occur within commercial tolerances. We reserve the right to alter technical specifications without notice. The Unregistered Design Rights and the Copyright in all designs are the exclusive property of Camira Fabrics Limited.

### D

#### Zusammensetzung

100% post-consumer recyceltes Polyester

#### Umweltfreundlich

Nach Zertifikat EU Ecolabel  
Nach Zertifikat Indoor Advantage™ Gold  
Hergestellt aus 100% post-consumer recyceltes Polyester

#### Breite

140 cm nutzbare Breite

#### Gewicht

280 g/m<sup>2</sup> ±5% (392 g/lfd.m ±5%)

#### Scheuerfestigkeit\*

Schwerer Objekteinsetz / 10 Jahre  
Garantie Extern zertifiziert mit ≥80,000  
Scheuertouren Martindale

#### Feuersicherung

EN 1021 - 1 (Zigarettenstest)  
EN 1021 - 2 (Streichholztest)  
BS 7176 Low Hazard  
UNI 9175 Classe 1 IM

**Bitte bei Auftragserteilung angeben:**

BS 5852 Ignition Source 5 mit EnviroFlam5  
BS 7176 Medium Hazard mit EnviroFlam5  
The Furniture and Furnishing (Fire Safety) Regulations 1988 (UK Wohnmöbel Zigarettenstest und Streichholztest) mit EnviroFlam5

*Bemerkung: Die Schwerentflammbarkeit hängt von den verwendeten Komponenten ab. Unsere Zertifikate zeigen auf, welche Substrate bei den Tests verwendet wurden. Bei Verbundtests muss sichergestellt sein, daß das komplette Möbel den entsprechenden Standards entspricht.*

#### Lichtechtheit

5-6 (ISO 105 - B02)

#### Reibechtheit

Nass: 4, Trocken: 4 (ISO 105 - X12)

#### Chlorbleiche-Beständig

ISO 105 E03 Farbänderung 4 bei einer 1:4 verdünnten Chlor-Lösung

#### Reinigung

Regelmässig absaugen. Mit einem feuchten Tuch abwischen oder mit einem geeigneten Polstershampoo behandeln. Für eine Grundreinigung bitte Dampf, Chlorbleiche, Alkohol oder professionelle Trockenreinigung verwenden. Kann bei 60°C gewaschen werden. Weitere Informationen finden Sie in unserem Leitfaden zur Reinigung und Desinfektion.

\*Die Scheuerfestigkeitsprüfung ergibt selbst bei gleichen Testmustern stark abweichende Ergebnisse. Das Zertifikat eines unabhängigen Prüfinstitutes über ≥80,000 Scheuertouren erhalten Sie von unserem Vertriebsinnendienst oder auf unserer Webseite. Intern spezifizieren wir dieses Produkt mit >50,000 Scheuertouren, die in der Serienfertigung als realistisch angenommen werden. Bitte nehmen Sie zur Kenntnis, dass die Scheuerfestigkeitsprüfung allein keine Aussagekraft über die Langlebigkeit eines Bezugsstoffes hat. Wir sind von der Langlebigkeit unserer Produkte überzeugt und bieten daher 10 Jahre Garantie (Details auf Anfrage). Eine optimale Nahtausreissfestigkeit hängt von der Nahtfahne, der verwendeten Nadel und dem Näh-Garn ab. Wir empfehlen daher Nähveruche durchzuführen. Handelsübliche Farbabweichungen können auftreten und berechtigen nicht zur Reklamation. Wir behalten uns die Änderung technischer Spezifikationen vor. Die registrierten und nicht registrierten Urheberrechte der Dessinierungen sind ausschliessliches Eigentum der Camira Fabrics Limited.

### F

#### Composition

Fabriqu  en polyester recycl    100%

####  cologique

Avec le certificat EU Ecolabel  
Certifi    Indoor Advantage™ Gold  
Fabriqu  en polyester recycl    100% apr s consommation

#### Largeur

140 cm minimum

#### Poids

280 g/m<sup>2</sup> ±5% (392 g/m.l ±5%)

#### R sistance   l'abrasion\*

Usage intense / garantie 10 ans. Certificat ind pendant ≥80,000 cycles Martindale

#### Flammabilit 

EN 1021 - 1 (cigarette)  
EN 1021 - 2 (allumette)  
BS 7176 Low Hazard  
UNI 9175 Classe 1 IM

**Pri re de le mentionner lors de la commande:**

BS 5852 Ignition Source 5 avec EnviroFlam5  
BS 7176 Medium Hazard avec EnviroFlam5

The Furniture and Furnishing (Fire Safety) Regulations 1988 (UK domicile cigarette et allumette) avec EnviroFlam5  
*Notez: La performance de flammabilit  d pend des composantes utilis es. Nos certificats indiquent les substrats utilis s dans nos tests. Pour les tests composites, les clients doivent s'assurer que leurs meubles complets satisfont aux normes n cessaires.*

#### Solidit    la lumi re

5-6 (ISO 105 - B02)

#### Solidit  au Frottement

Mouill : 4, Sec: 4 (ISO 105 - X12)

#### Nettoyable au javel

ISO 105 E03 changement de couleur 4 pour le facteur de dilution 1: 4 solution de chlore

#### Nettoyage

Passez l'aspirateur r guli rement. Essayez avec un chiffon humide en utilisant un shampooing/savon pour tissus d'ameublement exclusif. Pour un nettoyage en profondeur, utilisez la vapeur, javel, alcool ou un nettoyage   sec professionnel. Peut  tre lav    la machine, programme maximum 60 c. Vous trouverez tous les d tails dans notre guide de nettoyage et de d sinfection.

\*Les tests de r sistance   l'abrasion proposent une large vari t  de r sultat final, parfois sur le m me  chantillon de tissu. Le certificat ind pendant de ≥80,000 cycles est disponible sur notre site internet; vous pouvez  galement contacter notre Service Clients. Nous validons ce produit - en interne -   >50,000 cycles; ce qui est, d'apr s nous, plus r aliste dans le but d'obtenir une continuit   gale des r sultats de tests. Merci de noter que l'abrasion seule ne constitue pas un indicateur de confiance dans la performance du tissu   long terme. Nous avons une confiance absolue en nos produits et leur durabilit , c'est pour cela que nous vous offrons une garantie robuste de 10 ans. Veuillez noter que la performance du joint d pend de sa construction ainsi que de l'aiguille et du type de fil utilis s. Une variation de couleurs peut provenir (commercialement tol rable). Nous r servons le droit de changer les sp cifications techniques sans pr avis. Les Droits de Conception non-enregistr s et les droits d'auteur de tous les motifs sont la propri t  exclusive de Camira Fabrics Limited.

### ES

#### Composici n

Producido con poliester 100% reciclado

#### Ambiental

Certificado con EU Ecolabel  
Certificado de Indoor Advantage™ Gold  
Producido con poliester 100% reciclado tras ser consumido

#### Ancho

140 cm m nimo

#### Peso

280 g/m<sup>2</sup> ±5% (392 g/lin.m ±5%)

#### Resistencia a la abrasi n\*

Garant  de 10 a os con uso intenso independientemente del certificado de ≥80,000 Ciclos Martindale

#### Inflamabilidad

EN 1021 - 1 (cigarillo)  
EN 1021 - 2 (cerilla)  
BS 7176 Low Hazard  
UNI 9175 Classe 1 IM

**Por favor especificar cuando se requiera en el pedido:**

BS 5852 Ignition Source 5 con EnviroFlam5  
BS 7176 Medium Hazard con EnviroFlam5  
The Furniture and Furnishing (Fire Safety) Regulations 1988 (UK dom stico cigarillo y cerilla) con EnviroFlam5

*Nota: El rendimiento de la inflamabilidad depende de los componentes usados. Nuestros certificados muestran qu  substratos se han usado en nuestros tests. Para tests compuestos nuestros clientes deben asegurar si sus muebles cumplen la normativa al uso.*

#### Solidez a la luz

5-6 (ISO 105 - B02)

#### Solidez al rozamiento

H medo: 4, Seco: 4 (ISO 105 - X12)

#### Posibilidad lavado con Lej 

ISO 105 E03 cambio color 4 para un factor de disoluci n 1:4 soluci n cloro

#### Limpieza

Uso aspirador regularmente. Limpiar con un trapo usando jab n y agua o producto limpieza para tapicer as. Para una limpieza m s profunda usar vapor, lej a, alcohol o limpieza en seco. Se puede lavar a 60 C. Los detalles completos se encuentran en nuestra gu a de limpieza y desinfecci n.

\*Los Test de Abrasi n producen unos resultados muy variables incluso con la misma muestra. El certificado de ≥80,000 ciclos Martindale est  disponible en nuestra web o se puede pedir al Departamento Comercial. Internamente certificamos este producto >50,000 ciclos, que pensamos que es lo m s realista posible en este caso, con una repetici n de resultados tan dispares. Tengan en cuenta que el Test de Abrasi n solo no es un indicador fiable sobre el desgaste de un tejido. De hecho, estamos tan convencidos en la durabilidad de nuestros tejidos, que ofrecemos una garant a de 10 a os (detalles completos disponibles). Tenga en cuenta que el rendimiento de la costura depende de la construcci n de la costura, adem s de la aguja y del tipo de rosca. Le recomendamos que se aconsejen para coser la costura. Las variaciones de lote a lote en la sombra se puede producir dentro de tolerancias comerciales. Nos reservamos el derecho a efectuar modificaciones t cnicas sin previo aviso. Los derechos sobre los dise os no registrados y los derechos de autor en todos los dise os son propiedad exclusiva de Camira Fabrics Limited.