



Needing to cater for everyone in your library?

We can beautifully display your books and store those resources - whilst creating areas for relaxed reading and inspiring learning areas.

Libraries & Learning Zones

Projects	190
Dynamix Shelving	191
Cantilever Shelving	192
Coniston Shelving	193
Grasmere Book Storage	193
Kandi Range	194,195
Book Storage Units	196,197
Book Spinner & Kinderboxes	198
Easy Seating	199-203
Study Hubs	204-205

Libraries & Learning Zones

Libraries are fast becoming much more than just a place to display books. With the rise of self-directed learning and personalised study programmes, libraries and learning zones are often the central feature of the school.

From group activities right through to individual study we have a full range of furniture, shelving and seating to create the perfect environment for you.

Whether its bespoke or from stock, you'll be amazed at the ideas we'll come up with based on solid experience combined with creativity and design flair. Zones to take your breath away!





Re-thinking your library or learning zones?

Let our designers demonstrate what we could do with your library or learning zone. Make your library a magnet for learners who want to be high achievers. Create an atmosphere conducive to serious study and let us design something that will stand out among other nearby schools.

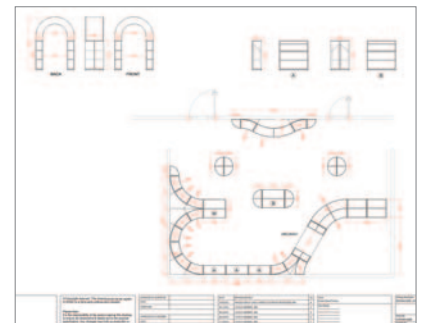
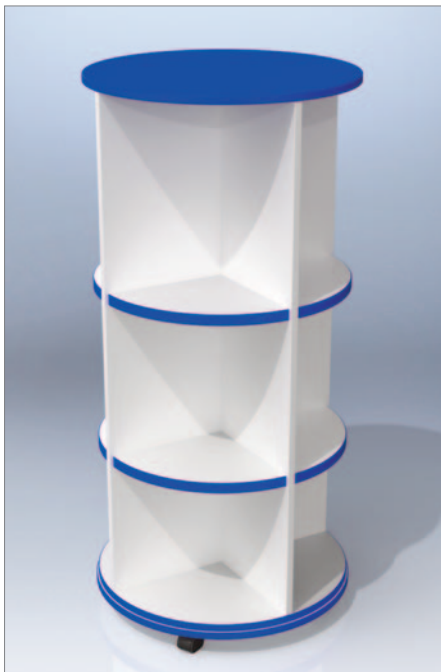
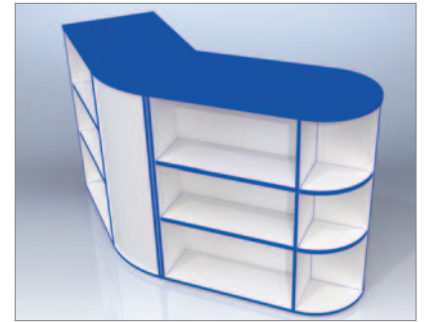
Our talented interior design team will develop 3D and 4D visuals to bring your new space to life. They'll help you to create a space that exceeds your expectations but not your budget.



Dynamix Library System



Stunning units with coloured edges and tops, the Dynamix range creates an impressive and stimulating library and learning environment.





Cantilever Shelving

- This versatile shelving system offers a wide range of shelves, on-shelf and signage accessories - ideal for all library and office requirements
- Modern, stylish and robust, this cost-effective system can be quickly adapted to meet your changing needs
- The system is quick and easy to construct saving down time and minimising disturbance
- Single-sided and double-sided shelving available
- Lockable castors are available to allow the shelving to be moved around the library whilst still offer stability
- Colour combinations offer huge versatility and endless possibilities
- Space planning and fitting also available
- Designed and manufactured in the UK

Single / double sided shelving

- Heights: 1200mm | 1500mm | 1800mm | 2100mm | 2300mm
- Depths: 200mm | 250mm | 300mm | 350mm
- Widths: 750mm | 900mm | 1000mm

Standard Finishes



White



Pale Grey



UK MADE

Premium Finishes



Blue



Yellow



Red



Purple



Green



Sapphire



Silver Grey



Smoke White



Graphite Grey



Black

End panel options

- End panel options can be used to define space, enhance the display, add colour or custom graphics to brand your library. A broad range of finishes are available, giving a choice of wood effect, laminate, mfc or paint coated. Please contact us for more information

**CONTACT US TO DISCUSS YOUR
SHELVING REQUIREMENTS**

Coniston Library Shelving

Coniston is a high quality range of shelving units, available in a choice of 8 colours, specifically designed to create practical and aesthetically pleasing learning environments.

- All units can be supplied in one colour or a combination, as shown
- Units can also be supplied with castors
- Available as single or double sided units and also starter units and add-on units to create a neat and uniform library area
- Complete with 5 year guarantee



Wood & colour finishes may not be representative of actual colours - please ask for a sample



Grasmere Curve Book Storage System

- Premium range made from high quality 18mm MFC in a choice of board finishes with cream back boards
- Choice of either single sided bookcases in 2 heights, or double sided mobile units in 3 different heights
- Other board finishes available - please ask for pricing and details

Wood & colour finishes may not be representative of actual colours - please ask for a sample



A. Grasmere straight bookcase

- Single sided
- Depth 320mm

	H x W (mm)	
Y200600	900 x 1000	£349.50
Y200604	900 x 600	£312.50



B. Grasmere straight bookcase

- Double sided
- Depth 600mm

	H x W (mm)	
Y200610	900 x 1000	£488.00
Y200612	1200 x 1000	£632.50
Y200614	1500 x 1000	£745.00
Y200616	900 x 600	£405.50
Y200618	1200 x 600	£558.00
Y200620	1500 x 600	£625.50



C. Grasmere curved bookcase

- Single sided
- Choice of concave - curves inwards or convex - curves outwards
- Max. depth 835, width 1180mm

		H (mm)	
Y200630	Convex	900	£524.00
Y200632	Concave	900	£524.00
Y200634	Convex	1200	£621.00
Y200636	Concave	1200	£621.00



D. Grasmere curved bookcase

- Double sided
- Max. depth 1115 x width 1575mm

		H (mm)	
Y200640	Convex	900	£678.50
Y200642	Convex	1200	£884.00
Y200644	Convex	1500	£1174.50
Y200646	Concave	900	£678.50
Y200648	Concave	1200	£884.00
Y200650	Concave	1500	£1174.50



Kandi

The Kandi range allows you to create an instant library or reading corner in any space. Mix and match units to create immersive student areas. Available in 7 bright colours and 2 wood finishes.

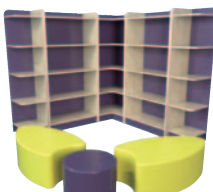
Y400100	Island Set H1500 x W1450 x D350mm	£1865.00
Y400102	Reading Straight Set H1500 x W1450 x D350mm	£858.00
Y400104	Reading Corner Set H1500 x W1465 x D1465mm	£1725.50
Y400106	Book Tree Oval H1500 x W900 x D320mm	£338.00
Y400108	Book Tree Triangle H1500 x W900 x D320mm	£338.00
Y400110	Display & Browse set H1250 x W2250 x D350mm	£1164.50
Y400112	Display & Browse with Stools set H1250 x W2250 x D350mm	£1503.50
Y400114	Reading Nook H1500 x W2700 x D676mm	£1958.00
Y400116	Hideaway Play Nook H1250 x W1700 x D676mm	£1370.00
Y400118	Hideaway Double Nook H1250 x W2100 x D676mm	£1504.00



Y400100



Y400102



Y400104



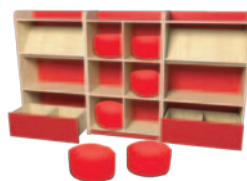
Y400106



Y400108



Y400110



Y400112



Y400114

Kandi Colour Options

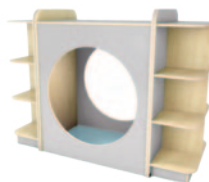


Beech Blue Orange Pink Green Maple Plum Pale Blue Red

Kandi Upholstery Colour Options



Apple Cobalt Blue Fuschia Lemon Red Orange Turquoise Violet



Y400116



Y400118

New
Product**A. Double D-end cap bookcases**

- W676 x D350mm
- Fixed shelves



Y404002	750mm High	£280.50
Y404004	1000mm High	£315.50
Y404006	1250mm High	£346.00
Y404008	1500mm High	£369.50
Y404010	1750mm High	£393.00
Y404012	2000mm High	£428.00



A

B. Reading bench

Set includes:

- 2 x 1500mm bookcase
- 1 x reading bench with seat pad
- 3 x cube soft seats
- H 750 x W 2734 x D 350mm



Y404014	Reading Bench	£1112.50
---------	---------------	----------



B

C. Double book browsers

- W 750 x D 400 mm



Y404016	Lower Book Browser	£184.50
Y404018	Tall Book Browser	£222.00



C

E. Library end bookcases

- Fixed shelves



Left

Y404020	750mm High	£233.50
Y404022	1000mm High	£245.00
Y404024	1250mm High	£257.00
Y404026	1500mm High	£268.50
Y404028	1750mm High	£280.50
Y404030	2000mm High	£292.00

Right

Y404032	750mm High	£233.50
Y404034	1000mm High	£245.00
Y404036	1250mm High	£257.00
Y404038	1500mm High	£268.50
Y404040	1750mm High	£280.50
Y404042	2000mm High	£292.00



D



A. Tiered shelf library unit

- In a choice of Beech-BE, or Maple-MP MFC finish
- Dimensions: W760 x D380mm
- 4 tier H780mm, 5 tier H965mm

Y15092	4 Tier Unit	each	£239.00
Y15094	5 Tier Unit	each	£279.00

A



B



B. Straight shelf library unit

- In a choice of Beech-BE, or Maple-MP MFC finish
- Dimensions: W1040 x D502mm
- 3 tier H1000mm, 4 tier H1500mm

Y15096	3 Tier Unit	each	£209.50
Y15098	4 Tier Unit	each	£255.50

C



C. 2 & 3 shelf library units

- Popular double sided Beech units
- 2 shelf unit has 2 angled display shelves each side, and a flat storage shelf
- The 3 shelf unit has 3 flat storage shelves either side
- W1040 x D500 x H850mm

Y15106	2 Shelf Unit	£232.50
Y15114	3 Shelf Unit	£249.00

D



D. Hanging big book storage unit

- Ideal storage for big books and group readers
- Attractive beech wood finish
- Double hanging rail to accommodate all sizes

YTG01	Hanging Big Book Storage Unit	£450.50
-------	-------------------------------	---------

New Product

A. Library unit with 3 straight shelves on both sides

- W 1044 x D 502 x H 883 mm



Y406002	Cyan	£192.50
Y406004	Pink	£192.50
Y406006	Lime	£192.50
Y406008	Orange	£192.50



A

B. Library unit with 2 angled & 1 horizontal shelf on both sides

- W 1044 x D 502 x H 883 mm



Y406010	Cyan	£215.50
Y406012	Pink	£215.50
Y406014	Lime	£215.50
Y406016	Orange	£215.50



B

C. Double sided library unit with 3 tiered fixed shelves on both sides

- W 760 x D 760 x H 650 mm



Y406018	Cyan	£269.00
Y406020	Pink	£269.00
Y406022	Lime	£269.00
Y406024	Orange	£269.00



C

D. Single sided library unit with 4 tiered fixed shelves

- W 760 x D 380 x H 780 mm



Y406026	Cyan	£194.50
Y406028	Pink	£194.50
Y406030	Lime	£194.50
Y406032	Orange	£194.50



D

E. Single sided library unit with 2 fixed straight shelves

- W 1040 x D 502 x H 1000 mm

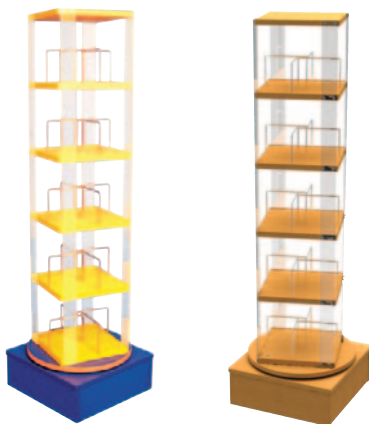


Y406034	Cyan	£212.00
Y406036	Pink	£212.00
Y406038	Lime	£212.00
Y406040	Orange	£212.00



E

A



A. Book spinner

- This smaller version of an adult paperback tower holds 125 books or 60 videos
- The tower and base can be chosen in two different colours to create your own multi-coloured unit
- Please specify the base and tower colours when ordering the coloured book spinner
- Size: W400 x D400 x H1350mm
- Internal slot height: 220mm
- Dimensions for book space between dividers: 115 x 115mm

Y15110	Book Spinner Beech	£362.00
Y15112	Book Spinner Coloured	£394.00



UK MADE

B



B. Big book holder

- Beech melamine unit stores books vertically in six slots
- Available with or without castors
- W695 x D504 x H600mm

Y15108	Big Book Holder Mobile	£232.50
Y15109	Big Book Holder Static	£232.50

C



C. 4 legged kinderbox

- Wooden or metal 4 legged frame 4 kinderbox unit
- Boxes available in beech, red, green, yellow or blue finish
- Wooden frame: D620 x W620 x H360mm
- Metal frame: D600 x W600 x H360mm
- Bespoke sizes and shapes available

YBX05W	Wooden Frame Kinderbox	£212.00
YBX05M	Metal Frame Kinderbox	£231.50

Verve

The opportunities are endless with the Verve range - simply intertwine pieces to create a unique, creative library or learning area. Verve units are chunky, very comfortable and available in H250, H450 or H650mm. Prices shown are for H450mm. Other configurations available, please just ask!

Y400120	Verve One Seater
Y400122	Verve Two Seater
Y400124	Verve Three Seater
Y400126	Verve Five Seater
Y400128	Verve Join Three Seater
Y400130	Verve Join Four Seater
Y400132	Verve Join Five Seater
Y400134	Verve Join Six Seater
Y400136	Verve Join Three Seater Pod



Y400120, Y400122, Y400124, Y400126



Y400136



Y400128, Y400130, Y400132, Y400134

Aspect modular vinyl range

- A flexible range of modular seating perfect for librarians and breakout areas
- Fully upholstered modular furniture with deep cushions for comfort
- Matching table with oak look or glass top
- Seat: H400 x W575mm
- Available in: Vinyl band 4



YREC25WV	Chair	£246.00
YREC26WV	Chair Left Arm	£306.50
YREC27WV	Chair Right Arm	£306.50
YREC28WV	Arm Chair	£395.50
YREC29WV	Two Seater Arm Chair	£661.00
YREC31WV	Corner Seat	£291.50
YREC32WV	30 Deg. Internal Link	£374.00
YREC33WV	60 Deg. External Link	£289.00
YREC32LWV	30 Deg. Internal Link With Left Arm	£366.50
YREC32RWV	30 Deg. Internal Link With Right Arm	£366.50
YREC33LWV	60 Deg. External Link With Left Arm	£364.50
YREC33RWV	60 Deg. External Link With Right Arm	£364.50
YREC04WV	Vinyl Oak Top Table	£184.00
YREC04GV	Vinyl Glass Top Table	£220.20

Please specify fabric colour



Page Link - see page
Vinyl
Colour
Options

287





Iconic

- Bold and beautiful, Iconic is an attention-grabbing freeform seating range perfect for schools looking to add soft seating centre pieces to their libraries or learning spaces
- Available in eye-catching Teardrop, Cloverleaf shapes, we also offer a Circular shape, in addition to the space-saving Wall shape for use at the edges of rooms
- Height adjustable feet
- Upholstered in a wide range of fabrics, faux leather, and colours
- Sizes:

Teardrop: H985 x W3425 x D2655mm

Wall: H890 x W2410 x D815mm

Circular: H850 x D2500

Cloverleaf: H850 x W4155 x D4155mm



Teardrop



Wall



Circular



Clover Leaf

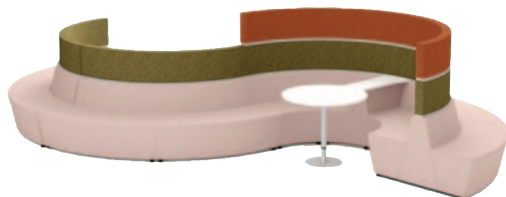
Please call for more
information



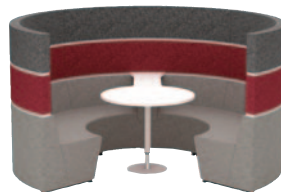
Huddle

Huddle is a statement modular furniture collection that facilitates a multitude of ways to work via the creation of configurable and connected spaces. It is an innovative system designed to enable spaces to flex and adapt using easy to assemble modules to configure different shapes, making each space unique to the needs of the environment.

- The Huddle collection is based on four modular components: backs, benches, screens and work rails
- Available with integrated technology including power modules and WIFI
- These modules can be curved or straight and are available in a choice of widths; with or without legs
- Integral work surfaces and tables are optional
- Available in a wide range of fabrics, vinyls and leathers



Y369810 Configuration 1



Y369812 Configuration 2



Y369814 Configuration 3

Readingzone



- Ideal for library areas, receptions, common rooms, in fact they fit anywhere!
- Seat height 440mm
- Please call for bulk discounts



Unlimited fabrics available

Prices shown are for Phoenix, Era and Rivet fabrics only - see pages 284-287. Please contact us for prices on other fabrics.



Round stool

- H440 X D400mm

YSTYROF*	Fabric	£226.00
YSTYROV*	Vinyl	£232.50



Square stool

- H440 X W400 X D400mm

YSTYSQF*	Fabric	£230.00
YSTYSQV*	Vinyl	£238.00



Two seater bench

- H440 X W800 X D400mm

YSTY2F*	Fabric	£266.00
YSTY2V*	Vinyl	£274.50



Three seater bench

- H440 X W1200 X D400mm

YSTY3F*	Fabric	£317.50
YSTY3V*	Vinyl	£330.50



Oval stool

- H440 X W780 X D400mm

YSTYOVF*	Fabric	£278.00
YSTYOVV*	Vinyl	£291.00



Wedge stool

- H440 X W530/400 X D400mm

YSTYWGF*	Fabric	£224.00
YSTYWGV*	Vinyl	£230.00



Quadrant stool

- H440 X W 860 X D400mm

YSTYQUF*	Fabric	£292.00
YSTYQUV*	Vinyl	£305.00



Tangent stool

- H440 X W790 X D400mm

YSTYTGF*	Fabric	£354.00
YSTYTGV*	Vinyl	£373.50

Page Link - see page

Early Years Versions

119



Page Link - see page

View more styles...

249



Arrow stool

- H440 x W400 x D600mm

Y420130*	Fabric	£242.50
Y420132*	Vinyl	£249.50



Large island stool

- H830/440 X D1600mm

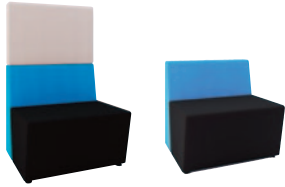
YSTYISF*	Fabric	£912.50
YSTYISV*	Vinyl	£945.50



Oasis

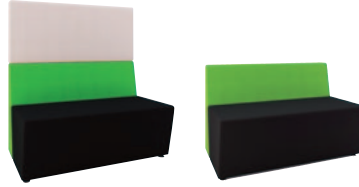
- Comfortable modular seating
- Endless configurations

More from this range
on pages 236-237



Single seater straight unit

Y600110	1 Seater	£718.00
Y600115	1 Seater with Back Extension	£1002.00



2 seater straight unit

Y600120	2 Seater	£872.00
Y600125	2 Seater with Back Extension	£1184.00



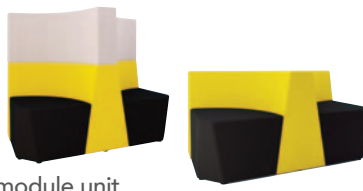
3 seater straight unit

Y600130	3 Seater	£1005.00
Y600135	3 Seater with Back Extension	£1358.00



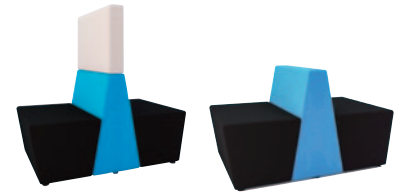
Corner unit

Y600140	Corner Unit	£711.00
Y600145	Unit with Back Extension	£1051.00



T module unit

Y600150	T Module Unit	£1263.00
Y600155	Unit with Back Extension	£1792.00



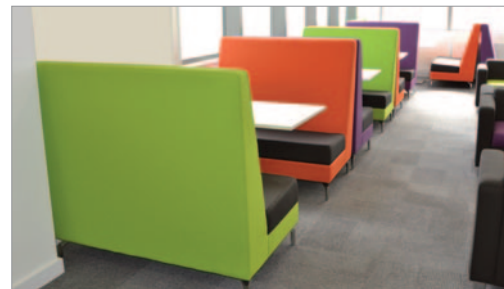
Back to back single seater

Y600160	Back to Back Single Seater	£1006.00
Y600165	Unit with Back Extension	£1325.00

Whisper



A. YWHIS1	Double Straight High Back Seat Unit	£900.00
B. YWHIS4	Single High Back Seat Unit	£658.00
C. YWHIS2	45 Degree Concave High Back Seat Unit	£1044.00
D. YWHIS3	45 Degree Convex Straight High Back Seat Unit	£907.00



Unlimited fabrics available

Prices shown are for Era and Rivet fabrics only - see pages 284-287. Please contact us for prices on other fabrics.



A



B



C



D



Causeway

- These irregular hexagonal form seats are available in 2 heights that serve as both sitting and backrest units
- Can be freely combined in infinite arrangements
- Ideal for chillout zones, waiting areas and entrance halls
- Connected with black, powder coated metal links

YCWAYHU	High Unit (750mm)	£355.00
YCWAYLU	Low Unit (450mm)	£274.00
Y400260	Side Table	£250.00



Bean bags

- Perfect for indoor as well as outdoor use, this versatile bean bag is great for relaxed learning environments
- Tough wipe-clean waterproof fabric makes it perfect for outdoor reading
- Available in a range of bright colours
- Other fabric options available including pastel colours, quilted, fur and suede

		H x W x L(mm)	
Y400900	Mini Relax Pod	740 x 740 x 710	£84.50
Y400901	Mighty Relax Pod	800 x 990 x 940	£135.50
Y400902	Monster Relax Pod	940 x 1160 x 800	£191.00

Made from
waterproof material



Orange Red Pink Cyan Blue Wine



Green Brown White Black Grey





Retreat - Booth



Retreat - Cube



Retreat - Curve

Retreat

Retreat is a range of acoustic work areas created to make open spaces private.

With numerous styles, configurations and a full range of accessories, Retreat can be used in many different environments.

Please contact us for more details and ask about our planning and design services.



Blox

Tiered seating – perfect for library and school environments!
The Blox range offers total modularity which means that a room can be quickly and easily converted to whatever use is required, even using the units as room dividers to accommodate separate groups.



Its style and functionality are matched by its quality, comfort and durability. The Blox range is available in numerous configurations and is upholstered in a wide range of fabric, vinyl or leather. A plywood base option with a fabric seat pad is also available. Please contact us for more details!

Hive

The Hive range nestles and tessellates to optimise available space, allowing the creation of an agile and flexible work space. Perfect for encouraging self-directed learning amongst students, the Hive pods create a quiet space amongst the bustle ensuring optimum productivity.

Please call for more information



Raft high back

A highly versatile modular seating system, the Raft High Back range combines pleasing aesthetics with acoustic properties to create a practical and affordable learning environment solution.

See pricing and more of the range on page 239

See page 239 for the full Raft high back range

