



Is your IT suite smart?

With space optimization and intelligent design, we can help you achieve more in less space!

## IT Suites

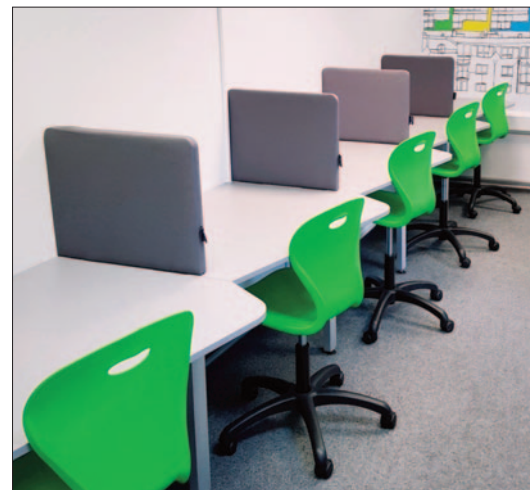
Bespoke IT Benching Solutions	150-151
IT Poly Seating	152-155,158
IT Upholstered Seating	156-157
Stools	157
Flex Chair	159
Charge Lockers	160-161
Laptop Storage	162-163

## IT Suites

When it comes to creating your ideal IT suite we can design a unique solution for your requirements.

Whatever surface, size or colour, we have a range of standard units and bespoke solutions that will meet the most demanding needs and technical requirements for the most effective IT teaching space.

From built in lap top charging units down to individual chairs, we can tailor your IT suite to your own needs and we don't stop with the delivery, we can fit them, wire them and commission on site.



Due to limitations in the printing process, wood and colour finishes shown throughout the catalogue may not be representative of actual colour. Samples are available on request.



# IT BENCHING SOLUTIONS



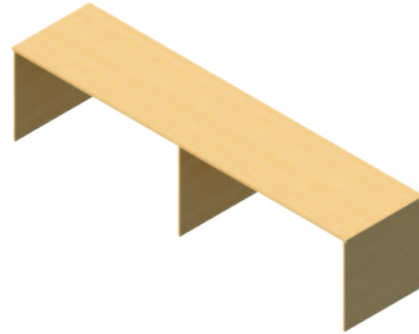
Ask about our  
FREE space planning  
& design service



## Flat Panel & Goal Post Legs

### Panel Leg

Heavy duty panel leg for a solid timeless look that can be scribed to fit many room requirements. Options include a full range of popular frame finishes/colours with strong matching edging for a quality finish, and additional cable management. Available in any dimension to suit your space – please enquire!



### Goal Post Style Leg

Very strong and stable leg option – an adjustable style for accurate lengths in any room, provides extra cable management options. Available in a full range of popular frame finishes/colours, and any height or depth dimension to suit your space – please enquire!

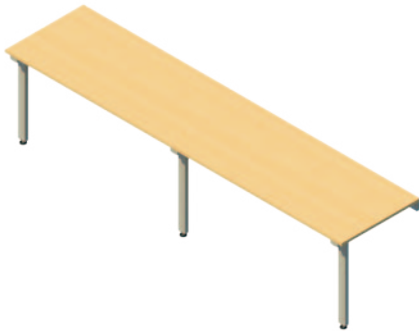


# IT BENCHING SOLUTIONS

## Adjustable Front Legs & Cantilever Legs

### Aluminium Adjustable Track Leg Benching

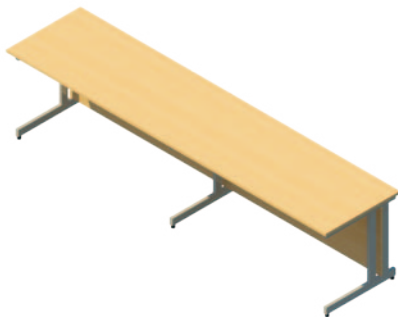
The ultimate benching system, with highly flexible features to suit most rooms. Incorporating clever rail systems that allow for accurate adjustment and easy reconfiguration options. Options include cable management and a range of popular frame finishes/colours. Available in a range of depths and heights to suit your space - please enquire!



Ask about our  
FREE space planning  
& design service

### Cantilever Leg

The cantilever leg is a strong and smart option. The desk-style leg provides good knee space and allows for modesty panel option. Other options include additional cable management as well as a full range of frame finishes/colours to match. Many height and depth options to offer – please enquire.



5 Year  
Warranty

A

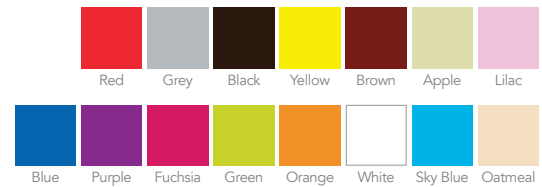


Glides Castors

### A. Flow IT chair

- Virtually indestructible shell
- Tamperproof - all metal height adjustment lever
- Suitable for junior or adult use
- In stock for rapid delivery
- Seat height 390 - 520mm
- Available with glides or castors
- Small order charge applies

YENIT50	each	£94.95
---------	------	--------



### B. Profile swivel chair

- Profile is a modern, comfort designed, swivel chair certified for education and suitable for a wide range of applications
- Available with casters or glides
- Seat is available in a range of colours to suit the clients space
- Seat height 430-560mm
- Overall width and depth: 600 x 600mm

YCONTX2-B	With Black Nylon Base	£129.00
YCONTX2-C	With Chrome Base	£149.00



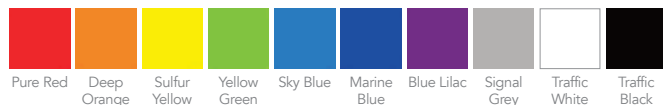
B



### A. Vogue IT chair

- Ergonomic and dynamic Swivel Chair that supports the user in all directions
- One Piece 100% Recyclable shell
- 5 Year guarantee
- Ergonomic and strength compliant to education standard
- 12 Vibrant Shell colours
- Available with castors or glides (please specify)

YVG3601 £119.00



Phone  
For Bulk  
Prices

Page Link - see page  
For more Positive Posture ➔ 37



5 Year  
Warranty

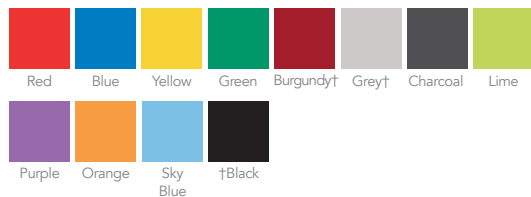
A



### B. Positive Posture IT chair

- Stylish chair with chrome base, complements the positive posture 1 piece polypropylene chairs
- Junior colours: Green, Yellow, Red, Blue, Purple, Lime, Sky, Orange
- Additional adult colours: Grey, Charcoal, Black, Burgundy
- Fabric seat pads also available - POA
- Available with glides or castors (please specify)
- Small order charge applies

		seat height	
YPP101J	Junior Height	405 - 460mm	£98.00
YPP102A	Adult Height	465 - 555mm	£109.00



B



5 Year  
Warranty

A



Glides Castors

### A. Mono posture IT chair

- Perfect ergonomics with unique waterfall seat edge and lower back lumbar design
- Flame retardant to CRIB 5, compliant to BS5852 2006
- Available in 15 colours
- Size: H395-485 x W415 x D450 x overall H760-850mm
- Available with castors or glides (please specify)
- Small order charge applies

Y32011 Mono Posture IT Chair £85.80

Phone  
For Bulk  
Prices5 Year  
Warranty

B



Glides Castors

### B. Pennine swivel chair

- Innovative design for perfect postural support
- Seat back with pelvic support relieves Pressure
- Black 5 star base with Gas lift
- Seat height range of 420-555mm
- Available with castors or glides (please specify)

Y100166 £94.20



**Eaton task chair**

- A modern multi-functional shell chair, manufactured in the UK
- A simple design formed with clean lines and subtle curves to form an ergonomic seat shape, providing flexibility of movement and comfort in a variety of different sitting positions - from upright to side on to kicking back
- Ideal for higher education, co-working and office environments
- UV resistant poly seat that is 100% recyclable
- Wide range of seat colours
- Black 5 star swivel base with castors
- Black steel armrests available as an optional extra
- Task stool has a 5 star base with glides and footrail ring
- Upholstered seat pad or full seat upholstery available – Please ask for prices and fabric options
- Overall dimensions: W600 x D600 x H625-745mm
- Seat height range: 400-520mm, stool: 600-860mm

YEATSK01	Task Chair	£195.00
YEATSKA01	Task Chair with Arms	£245.00
YEATSK05	High Task Stool	£238.00



Upholstery Options  
Seat Pad only or Fully Upholstered  
Please ask for prices and fabric options

**Eaton Swiss task chair**

- Attractive black angled 4 star swivel base ( not height adjustable)
- Black steel armrests available as an optional extra
- Upholstered seat pad or full seat upholstery available – Please ask for prices and fabric options
- Dimensions: W600 x D600 x H790mm (fixed seat height 460mm)

YEASWTSK02	Task Chair	£229.00
YEASWTSK03	Task Chair with Arms	£249.00



Coral Red    Signal Orange    Signal Yellow    May Green    Pastel Blue    Violet Blue    Light Grey    Mouse Grey    Traffic White    Traffic Black



Upholstery Options  
Seat Pad only or Fully Upholstered  
Please ask for prices and fabric options



Phone  
For Bulk  
Prices

A



Glides



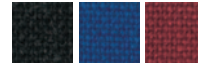
Castors

### A. IT mid back operator chair

- Medium back operator chair
- Built in the UK for the educational market
- Non marking wheels to protect floors
- Black 5 Star base as standard
- 5 year guarantee
- Dimensions: W500 x D550 x H860mm
- Seat height range: 475 - 605mm
- Available with castors or glides
- Available in 3 standard fabric colours: charcoal, royal blue and burgundy – for other fabrics POA

Y20106IT

£94.80



Charcoal Royal Blue Burgundy

Best  
Seller

5 Year  
Warranty

B

Colour  
Options

Choose  
1. Colour see pages 284-287  
2. Castors or glides



Glides



Castors

### B. Student IT tamperproof



- This strong and comfortable chair is proven in education, and is one of the most popular IT chairs on the market
- The seat and back are joined with two robust metal struts either side, with a very strong underseat frame and just one tough height adjustment ring
- The chair is designed and built for this purpose and offers great value for money

		Height Range	
Y15066	With Castors	400-600mm	£129.00
Y15068	With Glides	400-600mm	£98.50
YTWOT	Addn. Charge for 2-Tone Fabrics from Band 1		£18.50

Fabric ranges shown on page 284-287 or ask for a swatch

C



Glides



Castors

### C. IT tamperproof operator chair

- Medium sized back operator chair with tamperproof fixings
- Built in the UK for the educational market
- Available with castors or glides – please state
- Black 5 star base
- 5 year guarantee
- Dimensions: W500 x D460 x H890mm
- Seat height range: 465 – 595mm
- Available in 3 standard fabric colours – charcoal, royal blue and burgundy
- For other fabrics POA

Y32013TP

POA



Charcoal Royal Blue Burgundy

### A. Junior small IT swivel chair

- Heavy duty junior size operator
- Built in the UK for the educational market
- Flame retardant foam
- Black 5 star base as standard
- Available with castors or glides
- Dimensions: W450 x D560 x H810mm
- Seat height range: 470-570mm
- Available in a wide range of fabrics

Y32013 POA



A

### B. IT stool

- Available with black/chrome components
- Castors available: standard castors (as shown on image), rubber castors, brake loaded castors, manual locking castors, or glides
- A choice of 90 Advantage and Phoenix colours



#### Gas Lift

YITSB	Standard Stool Black Base	£98.75
YITSC	Chrome Frame	£82.80



Phoenix, Era and Rivet fabric ranges shown on pages 284-287 or ask for a swatch.

**Colour Options** Choose  
 1. Colour see pages 284-287  
 2. Castors or glides



B

### C. Mono posture low task stool

- Ideal for teaching assistants use in classrooms
- Perfect ergonomics with a unique waterfall seat edge
- 16 colour options
- Available with castors or glides (please specify)

Y32022 POA



C

15 Year  
Warranty

A



### A. Ruckus chair

- A mobile stacking chair that transforms learning space by its inspiring and innovative design
- Designed to encourage a unique sitting experience that inspires interaction with others
- Ideal for breakout and interactive learning spaces
- Large seat surface with a unique backrest/armrest that can be used as a worksurface or a perfectly balanced perch
- Lower wire bookrack as shown, for added functionality!
- Available in a range of colours to match the seat
- 24 seat colours and 31 frame finishes – the choice is yours!
- 15 year warranty
- Seat height: 455mm

YRSTK007

POA

5 Year  
Warranty

B

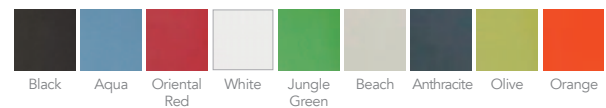


### B. Mobile+ chair

- A unique, adjustable multi-functional chair designed to offer maximum comfort & ergonomic support to the user
- Integrated rotating writing tablet, dashboard and storage facilities for a cooperative and agile learning experience
- Moulded one piece flexible seat shell with a V-shaped back offering superb lumbar support
- Integrated tilt mechanism and gas lift
- Black 5 star base with castors
- Available in 10 shell colours
- 5 year warranty

YAC2W

POA



## Flex Chair

- Flex is a mobile and flexible solution, allowing you to shift between various seating arrangements and learning activities easily large workspace, adjustable to its users body and seating posture
- Large seating shell with lumbar support and flexible body
- Worksurface contains silver ions to make it 99.9% Antimicrobial

Y100720 - X base with workspace	POA
Y100721 - X base without workspace	POA
Y100722 - Star Base with Workspace	POA
Y100723 - Star base without workspace	POA



T Base



Star Base

### Shell Colours



Lecture mode



Group work mode



Discussion mode





## Charge Lockers

Charging and security solutions for laptops, netbooks, tablets, Apple devices and other IT equipment.

- All charging units are CE marked (marking on a product is a manufacturer's declaration that the product complies with the essential requirements of the relevant European health, safety and environmental protection legislation)
- All doors are secured to a welded locker frame by a solid vertical rod acting as the hinge
- All the units are manufactured from 0.9 mm steel for the doors and frame and 0.7mm for the backs and sides.
- All compartments have a transparent lock cover incorporating the facility to number each door to help identification
- Each charging compartment has a rear perforated panel to allow excess heat to dissipate

Single power socket located at the rear of each compartment

A



B



### A. 16 Compartment mobile charge trolley

YCH16M	Locker 1200 x 760 x 525mm	£2038.80
--------	---------------------------	----------

C



### B. 15 Compartment charge

YCH15	Locker 1780 x 380 x 525mm	£795.00
-------	---------------------------	---------

### C. 4 Compartment charge

YCH04	Locker 1780 x 380 x 460mm	£392.80
-------	---------------------------	---------

Door colours



Red

Blue

White

Carcass colours



White

## Charge Lockers

Best  
Seller



### Power 2 Learn charging trolley & charging inserts

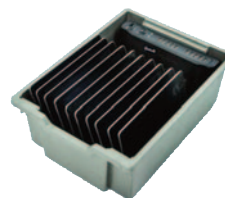
- This slim-line trolley has one of the smallest footprints in the market which makes this a perfect low cost and practical device charging option for smaller classrooms or learning areas
- The trolley can hold either 2 extra deep power trays or 3 deep power trays (see ordering options below)
- Each tray can charge a variety of USB devices in lightning fast speed using dynamic device recognition
- Lockable trolley to securely store and charge tablets and small devices
- Trays available to order separately (not recommended for secure storage of devices)
- Each tray comes with a UK socket adaptor – simply plug in, switch on and connect up to 10 USB devices to charge
- Trays available only in silver grey or white
- Steel trolley available in 5 modern bright colours: silver, white, power blue, power pink and power yellow
- W423 x D454 x H957mm (inc. handle)



YP2L102	Trolley with 2 Extra Deep Charging Trays	£928.80
YP2L103	Trolley with 3 Deep Charging Trays	£1126.80
YPTCF02	Deep Charging Tray ONLY	£262.80
YPTCF02.5	Extra Deep Charging Tray ONLY	£274.80



Power Blue    White    Silver Grey    Power Yellow    Power Pink



Deep Charging Tray  
(Comes with Socket  
Adaptor)



Extra Deep Charging  
Tray (Comes With  
Socket Adaptor)





## Laptop Storage

### Lapcabby - vertical

- 10, 15 (includes projector and printer storage), 16 and 20 port laptop trolley
- Lockable unit to securely store and recharge laptops - sequential power supply included
- Specifically designed and tested air venting system maintains the security of the unit whilst increasing ventilation
- Soft rubber grips cushion and protect laptops when in storage and large L-shaped doors and sliding shelves provide easy, clear access to laptop storage compartment

a. YLAPC10V	LapCabby 10V W616 x D703 x H1115mm	£1030.00
b. YLAPC15V	LapCabby 15V W1015 x D703 x H1115mm	£1614.00
c. YLAPC16V	LapCabby 16V W1015 x D703 x H1115mm	£1366.80
d. YLAPC20V	LapCabby 20V W1015 x D703 x H1115mm	£1546.80

### Lapcabby Colours



### Lapcabby - horizontal

- 16 and 32 laptop trolley
- Stored on an individual sliding tray for improved accessibility
- Lockable unit to securely store and recharge laptops - sequential power supply included
- Rear facing doors allows easy access to the individual AC adapters supplied with laptops
- The Power7 timer allows schools to program which time each day they would prefer to charge their laptops according to the class schedule or Economy 7 to reduce energy bills
- An innovative cable storage system that keeps cables compact, neat and tidy

e. YLAPC16H	LapCabby 16H W857 x D703 x H1215mm	£1750.80
f. YLAPC32H	LapCabby 32H W1291 x D703 x H1215mm	£2602.80

## Laptop Storage

### Lapcabby mini

- 20 and 32 port mini laptop trolley
- Lockable unit to securely store and recharge laptops - sequential power supply included
- Storage boxes available for greater protection against knocks and scrapes
- The Power7 timer allows schools to program which time each day they would prefer to charge their laptops according to the class schedule or Economy 7, to reduce energy bills
- Unique energy saving dual cables which connect to the AC adapters that are supplied with the laptops
- These cables will enable two mini laptops to charge using the same 3-pin plug
- Suitable for mini notebook laptops

a. YLAPCM20V	LapCabby 20V Mini W616 x D703 x H1115mm	£1182.00
b. YLAPCM32V	LapCabby 32V W1015 x D703 x H1115mm	£1594.80

### Tabcabby

- 32 port tablet trolley
- Colourful easy-access sliding trays hold two tablets each
- Fitted with a Power7 energy management system as standard
- For added safety, AC adaptors and power supply are stored in a separate compartments - only accessible via a concealed door release
- Unique cable storage keeps cables compact, neat and tidy
- Heavy duty wheels
- Innovative air ventilation to cool tablets whilst charging
- TabCabby Store&Charge allows you to charge the majority of tablets and other USB powered devices. Using the Cambionix U16S technology you can also simultaneously synchronise all the devices whilst they are in the TabCabby

c. YTABC32H	TabCabby W840 x D437 x H1030mm	£1486.80
d. YTABSYNC32	TabCabby Sync & Charge W840 x D437 x H1030mm	£2566.80

### Media-avcabby

- Designed to hold your multi-media equipment with your projector, amplifier, DVD, VCR and speakers etc. at your fingertips
- The Media-AVCabby comes complete with many features including integrated power and lockable doors which fold back a complete 270 degrees and are held in place by strong magnetic catches
- This versatile unit is manufactured from MFC with soft corners to the top and bottom and is assembled around a fully welded, powder coated steel frame, giving a sturdy unit capable of being moved easily on fully castored and braked rubber wheels

e. YMAVC200	Media-AVCabby W705 x D705 x H1105mm	£774.00
-------------	--	---------

